



Friday 20th September 2024

# Pennoweth News

Welcome to another edition of the Pennoweth News.

This week we would like to start with a few reminders for our parents and Carers. **Nasal Flu Immunisations** will be taking place on **Monday 23rd September**. Please be aware that families who have chosen to opt in will receive the immunisations as the booking window has now closed. **Individual Photographs** will be taking place on **Thursday 26th September**. Please ensure where possible, that children arrive in Pennoweth School uniform. In the event that it is your child's PE day, please ensure that they have a Pennoweth jumper, hoodie or Cardigan with them in preparation for the photographs.

Just a quick reminder that Clubs will be starting next week (WB23/09/24). However, 'Be the Change' and 'Film' Club will not be starting until the following week (WB 30/09/24).

Once again, across the school, we have had visitors in to enrich and engage the pupils in a number of our year groups. Let's see what has been going on across the school.

## Nursery

As part of our topic based on Autumn, we have been learning about apples. This has included looking at the different shapes and sizes, reading books, collecting apples from our trees in the outside Classroom, and planning how to make apple juice ready for Thursday's apple pressing. The children learnt how to cut safely using cutting knives and use their muscles to turn the handle on the apple scrapper. They finally pressed the apples to make their own juice, describing it as "Yummy", "Tasty" and "Lovely." Thank you to Mrs Leigh and the PTA for organising this amazing experience for us.

## Reception

This week we have been reading the story 'So Much' by Trish Cooke and talking about special family meals. We designed our own perfect meals and used the new phonemes we have learned (m,a,s,d,t,i,p,n) to label the initial sounds. On Thursday we were lucky enough to have some fantastic visitors come and help us turn our apples from the bottom garden into apple juice. The children all worked very hard to chop, sprat and press the apples until finally they were able to drink the fruits of their labour. Well done Reception!

## Keystage One

Year 1 have enjoyed learning all about Richard Trevithick in History and Sir Humphrey in English. The children have had a go at planning their very first fact file on Sir Humphrey Davy and we are all extremely proud of how well they have done! Well done year 1, keep up the brilliant writing!

Year 2 had a super exciting visit from PC Kirsty this week and really enjoyed hearing all about how to keep safe on the roads. The children have also written their first piece of writing for their clipboard this week and got to have a go at some apple pressing with the PTA on Thursday. The apple juice was a big hit!

## Keystage Two

This week in Year 3 and 4, pupils have been enjoying our class text, The Butterfly Lion by Michael Morpurgo. They have reached quite a gripping part of the story, where the main character, Bertie, and the lion cub are separated. This week, the focus reading skill was to 'summarise'. If your child is in Year 3 and 4, then ask them to practise this skill at home by summarising the story so far in their own words. Maybe they could then predict what will happen next.

We have been looking at leaflets in writing this week. Now that we have identified the features of this genre, looked at some of the SPaG features and carried out research about some land predators – leopards, hyenas and black mamba snakes – we look forward to beginning the writing and editing process of our own predator leaflets next week!

Finally, as part of our project, pupils learned about deadly aquatic predators in science this week, including jellyfish, great white sharks, bottlenose dolphins and humpback whales. They then created top trump style cards to narrate about their aquatic predator, recording information about its length, weight and speed before giving it a deadly rating!

It has all been about reading and writing this week in upperKS2! We are fully invested in our class novel 'Sky Hawk' and have been answering some deep, thought-provoking questions about the choices that authors make when they are writing. In our own writing, we have started looking at mystery narratives and are beginning to create our own mysterious characters and settings, using figurative language and a range of ambitious vocabulary. We can't wait to see how many budding novelists we have! We are also looking forward to taking 30 of our amazing children surfing next Friday 27th September!

Our phase email addresses are:

[eyfs@pennoweth.cornwall.sch.uk](mailto:eyfs@pennoweth.cornwall.sch.uk) (for Nursery and Reception)

[KS1@pennoweth.cornwall.sch.uk](mailto:KS1@pennoweth.cornwall.sch.uk) (for Years 1 and 2)

[lowerKS2@pennoweth.cornwall.sch.uk](mailto:lowerKS2@pennoweth.cornwall.sch.uk) (for Years 3 and 4)

[upperKS2@pennoweth.cornwall.sch.uk](mailto:upperKS2@pennoweth.cornwall.sch.uk) (for Years 5 and 6)

## School Lunches

Week beginning 23/09/24

(Week 3 choices from the Spring/  
Summer Term Menu)

Chartwells meal menu is on the  
school website



## Dates for your diary

*Start of Autumn Term (1)*

*Wednesday 4th September  
2024*

*End of Autumn Term (1)*

*Friday 25th October 2024*

*Start of Autumn Term (2)*

*Monday 4th November 2024*

*End of Autumn Term (2)*

*Friday 20th December 2024*

*Yearly Inset Days*

*14th October 2024*

*6th January 2025*

*24th February 2025*

*22nd April 2025*

*27th June 2025*

*23rd July 2025*

*Please view page two of the  
Newsletter for further term  
dates.*

# Key Upcoming Dates for your Diaries

---

## Autumn 1

### Saturday 21st September

Redruth School Super Saturday event for Year 6 pupils (Please follow the below link to book your place)

[https://forms.office.com/Pages/ResponsePage.aspx?](https://forms.office.com/Pages/ResponsePage.aspx?id=2x2t03_W90K9tsNihjHh2BD2Z_aVWwtJlWQOMxZ5ZQZUNjRRUcxUlg4Nk41RjAxQjNYToZH)

[id=2x2t03\\_W90K9tsNihjHh2BD2Z\\_aVWwtJlWQOMxZ5ZQZUNjRRUcxUlg4Nk41RjAxQjNYToZH](https://forms.office.com/Pages/ResponsePage.aspx?id=2x2t03_W90K9tsNihjHh2BD2Z_aVWwtJlWQOMxZ5ZQZUNjRRUcxUlg4Nk41RjAxQjNYToZH)  
[NZZKRY4u\)](https://forms.office.com/Pages/ResponsePage.aspx?id=2x2t03_W90K9tsNihjHh2BD2Z_aVWwtJlWQOMxZ5ZQZUNjRRUcxUlg4Nk41RjAxQjNYToZH)

### Monday 23rd September

Flu immunisations for children in Reception—Y6 (Parents must opt their child in to receive this)

### Tuesday 24th September

Year 3/4 Trip to the Regal Cinema (Circus performance) – pm

### Thurssday 26th September

Individual Pupil Photographs

### Friday 27th September

Year 5 & 6 Surf trip

### Monday 30th September—(Date Change)

Year 2 visit into Redruth

### Tuesday 1st October

Police Careers visit for Year 3 & 4 (In School)

### Tuesday 8th October

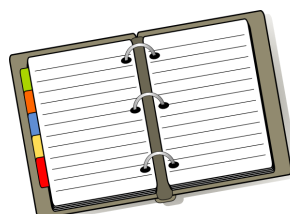
Early Years and Keystage 1 Harvest Festival visit @ St Andrews Church

### Monday 14th October

INSET DAY—SCHOOL CLOSED TO PUPILS

### Monday 21st October

Police Workshop for Years 5 & 6 (In School)



## Photographs from around the School

---



## Important Updates regarding Attendance

There are 175 non-school days in a year and 190 school days each year.

190 school days in each year  190 days for your child's education	7 days absence				
	183 days in school	10 days absence			
	180 days in school	19 days absence			
			28 days absence		
		171 days in school and the equivalent of a month not in school that year	162 days in school	47 days absence	
			If it 85% each year, your child is missing the equivalent of a year of education over their time at pri- mary school		143 days in school
100%	96%	95%	90%	85%	75%
<b>Good</b> -Best chance of success -Gets your child off to a flying start -Helps their confidence, social development as well as their academic progress -Over 97% is considered excellent attendance		<b>Some Concern</b> -Harder for your child to make progress -School starts tracking your child's attendance closely, Medical evidence may be required to authorise further absences linked to illness		<b>Worrying</b> -Your child is now classified as a 'persistent absentee' - Education Welfare Officer involvement is likely	
				<b>Serious Concern</b> -Having a significant impact on your child's education and well-being -Legal Action may be taken	

# Friends of Pennoweth Upcoming 2024 Winter Term

★

Messy Fun Walk - Thursday 26th September

We will be holding our first sensory fun walk after school. Come along to try the squishy messy fun. We will also have a fidget & squishy sale and tuck shop. All proceeds from this events will go towards equipment for the new sensory room.

★

Friends of Pennoweth AGM - Tuesday 1st October 7pm  
Pennoweth School Hall

Stay informed and get involved!

You can put in as much or little time as you can spare - any help is always appreciated.

★

Bag2School Collection - Wednesday 8th October

★

Half Term Discos - Thursday 24th October

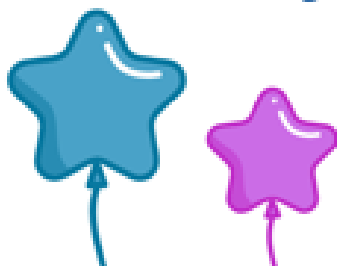
★

Wreath Workshop - Thursday 5th December

Come along and make your own Christmas wreath.

Message us to book.

★



# Our DNA

Everything we do in school is shaped by our Pennoweth DNA statements. Each week each phase team identifies one child who has done a fantastic job of demonstrating each strand of the DNA. Well done to all the children below.

**We are safe.**

**We feel loved.**


**We take responsibility.**

**We are always learning.**

**We are ready.**

Quality	Year R, Y1 and Y2	Year 3+4	Year 5+6
Safe	Nylah (Porthcurno) Esme (Restormel) Poppy (Restormel)	Robert (Godrevy)	Alfie L (Poldark)
Loved	George (Tintagel) Lily (Tintagel) Bobby (Gwithian)	Harper (Godrevy)	Izzy (Geevor)
Responsible	Reuben (Gwithian)	Grace (Lizard)	Ardhen (Levant)
Learning	Ayla (Mevagissey)	Enid (Lizard)	Dexter (Geevor)
Ready	Riley	Amber (Pendeen)	Blake (Levant)

**Congratulations to our stars of the week from each Class! Well done everyone!**

Pendennis Daily Awards	Tintagel Lamourah
Restormel Harry	Porthcurno James
Gwithian Sophie	Newlyn Freya-Rose
Mevagissey Kotryna	Pendeen Arianna
Godrevy Maisie	Lizard Pearl
Levant Rizzick	Geevor Nikola
Poldark Josh	

**Read Write Inc.**  
Phonics



Headteacher's

# Phonics Star of the Week

Awarded to

Esme (Reception)

20/09/24

C.Andrews

Date



Signature



**Read Write Inc.**  
Phonics



Headteacher's

# Phonics Star of the Week

Awarded to

Finley (Porthcurno)

20/09/24

C.Andrews

Date



Signature



# Attendance

We aim for all our children to have at least 96% attendance throughout the year.

Overall attendance for this week was

94.6%

see below for the attendance for each class last week.

Pendennis	96.7%
Tintagel	92%
Restormel	95.3%
Porthcurno	89.9%
Gwithian	85.6%
Newlyn	96.4%
Mevagissey	96.5%
Pendeen	96.7%
Lizard	92.3%
Godrevy	97.8%
Levant	94.6%
Geevor	97.2%
Poldark	97.9%

Congratulations Pendennis, Newlyn, Mevagissey, Pendeen, Godrevy, Geevor & Poldark class!

## Unauthorised Exceptional Leave of Absence Information

The law requires parents to ensure their children receive an efficient full time education, and every minute of every day is important. Please help them not to miss any of the valuable time.

We hope that when you read the information outlined on our website, you will consider that your child's education is too important to take on holidays during term time.

If an unauthorised leave of absence is taken, this may incur a penalty notice being issued under Section 444A and 444B of the Education Act 1996. This carries a fine of £60 if paid within 21 days or £120 if paid after this but within 28 days. Failure to pay the penalty notice will result in Court action.

## Unauthorised Late Information

If your child is arriving late—after the register has closed at 8:50am it will be coded as a U which, is an unauthorised late mark. If your child accrues 10 unauthorised late marks within 100 sessions (10 weeks) you will be committing an offence under the Education Act 1996.

The School may refer the matter to Cornwall Council who may decide to take legal action against you, issuing a penalty notice under section 444A and 444B of the Education Act 1996. This carries a fine of £60 per child, per parent if paid within 21 days or £120 if paid after this but within 28 days. Failure to pay the penalty notice will result in Court action.

Persistent absences/unauthorised lates, not authorised by the school, may result in a prosecution in the Magistrates Court, leading to fines up to £2500 and/or custodial sentences.



# Online Safety Update

At The National College, our WakeUpWednesday guides empower and equip parents, carers and educators with the confidence and practical skills to be able to have informed and age-appropriate conversations with children about online safety, mental health and wellbeing, and climate change. Formerly delivered by National Online Safety, these guides now address wider topics and themes. For further guides, hints and tips, please visit [nationalcollege.com](https://nationalcollege.com).

## What Parents & Educators Need to Know about FINAL FANTASY XIV

### WHAT ARE THE RISKS?

The video game Final Fantasy XIV launched in 2010, and, despite being critically panned, it saw an overhaul that has made it one of the biggest success stories in gaming. Its huge world, epic story and versatile combat system have continued to draw in new players, but there's a lot that trusted adults need to be aware of – not least the cost of paying monthly to play.

AGE RESTRICTION  
PEGI  
16

### ALWAYS ONLINE

Final Fantasy XIV is an MMORPG, which stands for Massively Multiplayer Online Role-Playing Game. Much like World of Warcraft, players create a character in a chosen class and level up by completing quests to gain power and items. The game requires a constant internet connection, whether you're playing on PC, Mac, PlayStation or Xbox, and there's no option to play offline.

### REGULAR EXPANSIONS

As with similar titles in the genre, players can purchase expansions to unlock additional content for the game. Those without the expansions will be locked out of certain new quests and activities, meaning that young people who play regularly will potentially have the next release earmarked on their calendar, ready to buy it as soon as possible.

### IN-GAME PURCHASES & SUBSCRIPTION FEE

Users need to pay £8.99 per month to play Final Fantasy XIV, but there is a free trial. If someone stops paying, they'll lose access to their character (although they'll be able to pick up the payments again and resume where they left off). If a player forgets to cancel their payments, however, those subscription fees will continue rolling on automatically.

FREE TRIAL

### VOICE & TEXT CHAT

Final Fantasy XIV lets players send chat messages in-game or speak to each other over voice chat. On the one hand, that provides plenty of choice for how those enjoying the game can interact with their fellow fans. On the other hand, however, it's easier than in many games to receive unprompted messages from a stranger, with whom you constantly share your play space.

### VIOLENCE

While Final Fantasy XIV has a fairly light tone throughout some of its quests, many involve killing enemies and sometimes even wild animals. The violence isn't especially strong – more comparable to a cartoon or anime style – but the act alone may make some children feel uncomfortable, if they're not yet able to separate fictional harm from the real kind.

### POTENTIAL FOR ADDICTION

As with World of Warcraft, there's an element of addiction to Final Fantasy XIV. The gameplay loop can be quite engrossing, as minutes turn into hours and hours into days while playing alone or with friends. This can potentially lead to missing real-life events, a lack of interest in any activities not related to the game and procrastination around responsibilities like schoolwork.

## Advice for Parents & Educators

### MANAGE PLAYTIME

Playtime limits are a great way to counter the addictive qualities of games like Final Fantasy XIV. They allow you to discuss why it's still important to enjoy things outside of gaming while still letting a child enjoy playing online with their friends when it makes sense to do so. It's all well and good to have fun with a game, so long as they're able to step away and reconnect with the real world.

### PLAY TOGETHER

The free trial makes it extremely easy to jump into Final Fantasy XIV and play alongside a child, provided they're old enough. Not only does that help you ensure that settings are adjusted for their privacy and safety, but it may also end up becoming a bonding experience for you both and any other family members that want to try it out.

### MAKE USE OF THE FREE TRIAL

The Final Fantasy XIV free trial is a generous one, with no limits on how long someone can play until their character hits level 70. That's easily dozens of hours for a child to go through the game, complete quests, and see if they enjoy it before purchasing expansions or subscribing to a membership. They may well move on to something else before you need to spend so much as a penny.

### REMEMBER, IT'S A PEGI 16

Despite its often-relaxing nature, Final Fantasy XIV carries a PEGI 16 rating for violence and drugs (although the latter is due to a character smoking a pipe on occasion). There's minimal blood, but characters can attack enemies (and other players) with weapons and spells. Take a look at some gameplay videos to see if the content is appropriate for a younger player.

### Meet Our Expert

Lloyd Coombes is the Editor-in-Chief of GGRecon, and has been working in the gaming and tech industry for five years. A longtime fan of online games, he's also a parent, and therefore understands the importance of online safety. Writing mainly about tech and fitness, his work has previously been published at sites including iGN, TechRadar and plenty more.



The National College

Source: See full reference list on guide page at <https://nationalcollege.com/guides/final-fantasy-14>

@wake\_up\_weds

/wuw.thenationalcollege

@wake.up.wednesday

@wake.up.weds

Users of this guide do so at their own discretion. No liability is entered into. Current as of the date of release: 18.09.2024

# Attendance Support

At The National College, our WakeUpWednesday guides empower and equip parents, carers and educators with the confidence and practical skills to be able to have informed and age-appropriate conversations with children about online safety, mental health and wellbeing, and climate change. Formerly delivered by National Online Safety, these guides now address wider topics and themes. For further guides, hints and tips, please visit [nationalcollege.com](https://nationalcollege.com).

## What Parents & Educators Need to Know about SCHOOL AVOIDANCE

Emotionally Based School Avoidance is a term used to refer to reduced attendance or non-attendance at school by a child or young person. It's often rooted in emotional, mental health or wellbeing issues. The rate of children who miss school more than 10% of the time in England has more than doubled since before the pandemic: rising from 10.9% in 2018-19, to 22.3% in 2022-23.

### UNDERSTANDING SCHOOL AVOIDANCE

#### REASONS FOR ABSENCE

School avoidance is sometimes underpinned by several factors rather than one single cause. This could include something going on for the child or young person within the family or at school. A child may have caring responsibilities at home, for instance, or a change in family dynamics; bullying and friendship difficulties at school; pressure to achieve in schoolwork and exams; or moving from primary school to secondary school.

#### PATTERNS OF ABSENCE

You may notice patterns in regular absences or children regularly expressing that they don't want to attend school (particularly being reluctant to leave home on school days). If a child or young person is neurodiverse, there is some evidence to suggest there are more aspects of school life which can cause distress – such as changes in the environment, changes of routine and sensory stimuli.

#### COMPLAINTS ABOUT PHYSICAL SYMPTOMS

There may be an increase in a child or young person's complaints about physical symptoms, particularly on school days or the evening before school. These could include complaining of a tummy ache, headache, or saying they feel ill when there doesn't appear to be a medical cause. Always check with the GP first to rule out medical causes or illness.

### IMPACT OF SCHOOL AVOIDANCE

#### LEARNING AND DEVELOPMENT

School refusal can negatively impact a young person's learning and development. Attending school on a regular basis not only supports academic attainment but is also important for the development of key life skills and the growth of children and young people as citizens.

#### LONG-TERM OUTCOMES

The difficulties associated with school non-attendance can be far reaching and may have a negative impact on long-term outcomes. It may, for example, lead to reduced future aspirations, poor emotional regulation, mental health difficulties, limited academic progress and restricted employment opportunities.

#### CYCLE OF ABSENCE

Consistent absences may contribute to sustained school avoidance over time. Further to this, the longer a pupil is out of education, the more likely it is that there is a rise in their ongoing need to avoid the activity which is making them anxious – increasing their desire to stay at home.

## Advice for Parents & Educators

### WORK TOGETHER

If there's a concern about a child's absence and emotional wellbeing, it's important that there is clear communication and a consistent approach between the child's parents and the school, so you can take a child-centred approach together towards a plan of support or reintegration. This ensures a consistency of approach from both home and school, creating better outcomes for the child.

### FOLLOW REGULAR ROUTINES

Children can benefit from a regular and consistent routine. This could be a morning routine, from waking up and having breakfast through to getting dressed, packing their bag and leaving the house. A consistent evening routine which is calm and limited time on screens can also give children much needed predictability and familiarity. Schools can help create a timetabled routine for the child's school day, if required.

### MANAGING OVERWHELMING FEELINGS

While there may be times you feel frustrated or angry, try to stay calm; acknowledge the child's worries, listen and discuss a range of coping strategies together to help them face the discomfort and overwhelming feelings. These could include mindfulness, deep breathing or going for a walk and practice the strategies in less overwhelming situations first.

### REDUCE STIMULATING ACTIVITIES AT HOME

If a child is avoiding school, reduce their access to more stimulating activities (such as watching television, playing games and spending time with friends) during school hours, where possible. This reduces the potential for the child having rewarding experiences at home, which could be interpreted as a positive aspect of avoiding school.

### Meet Our Expert

With 30 years' experience as a teacher, trainer, consultant and interim executive board member, Anna Bateman has a superb understanding of what works in pedagogy, school improvement and leadership. She has also advised the Department for Education on their mental health green paper.



The National College

Source: See full reference list on guide page at: [nationalcollege.com/guides/school-avoidance](https://nationalcollege.com/guides/school-avoidance)

@wake\_up\_weds

/www.thenationalcollege

@wake.up.wednesday

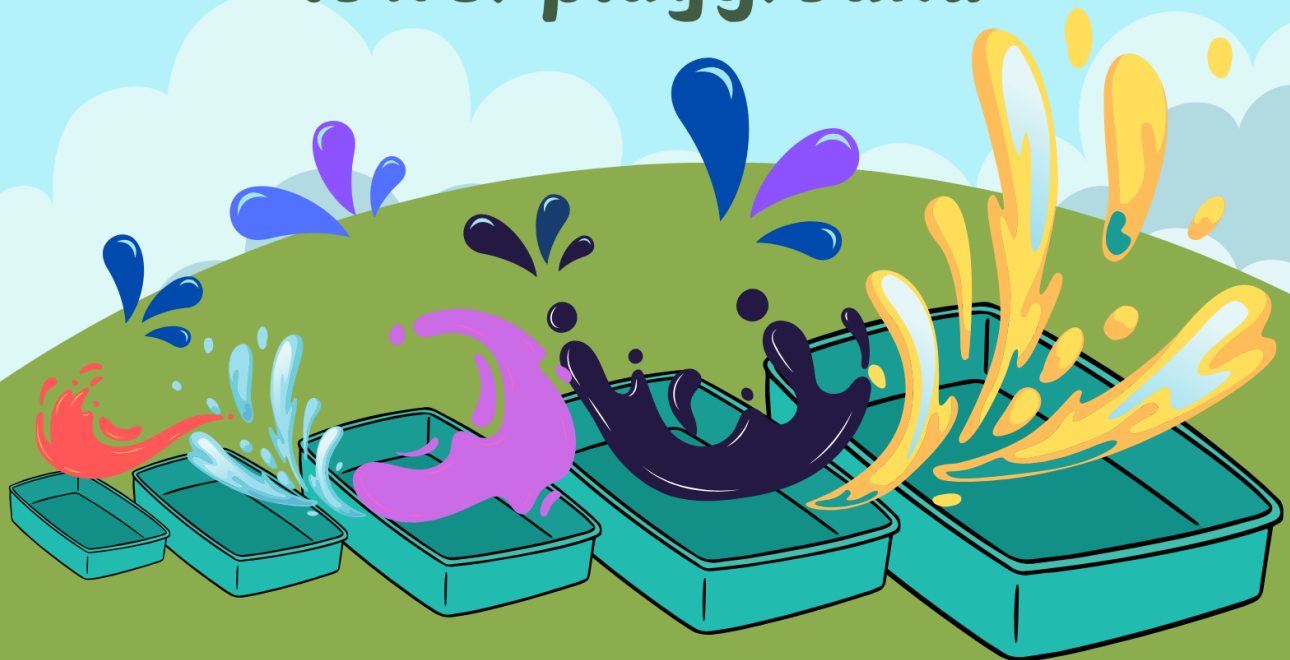
@wake.up.weds

Users of this guide do so at their own discretion. No liability is entered into. Current as of the date of release: 15.05.2024

# Messy Fun Walk

## Tuckshop and Fidget sale

Thursday 26th September  
after school –  
lower playground



**£1 a walk**

Money raised from this event goes towards  
the set up of the sensory room

**Friends of Pennoweth**

---

# Further News and Announcements



Together   
for Families

The  
deadline for  
applications is  
**15 January  
2025**

## Starting school September 2025

Applying for a place in  
a reception class for  
children born between  
1 September 2020 and  
31 August 2021



### Attending a nursery or pre-school

You will need to apply even if your child attends a school's nursery or pre-school class. Please note that if a school is oversubscribed the fact that a child attends a school's nursery or pre-school, or a local nursery or pre-school, does not automatically guarantee a place at that school. The school's oversubscription criteria will be used to allocate places. Visit our website or contact us for more information.

### Information and guidance

Website and application form: [www.cornwall.gov.uk/admissions](http://www.cornwall.gov.uk/admissions)

Email: [schooladmissions@cornwall.gov.uk](mailto:schooladmissions@cornwall.gov.uk)

Post: **School Admissions Team, County Hall, Truro, TR1 3AY**

Telephone: **0300 1234 101**



[www.cornwall.gov.uk/admissions](http://www.cornwall.gov.uk/admissions)



# Further News and Announcements



Together   
for Families

The  
deadline for  
applications is  
**15 January  
2025**

Do you have a  
child born **between  
1 September 2020  
and 31 August 2021?**

If so, you will need to apply  
for a place in a reception  
class in September 2025 for  
your child by the deadline  
of **15 January 2025**.



**Please note:** you will need to apply even if your child attends a school's nursery or pre-school class. If a school is oversubscribed the fact that a child attends a school's nursery or pre-school, or a local nursery or pre-school, does not automatically guarantee a place at that school. The school's oversubscription criteria will be used to allocate places. Visit our website or contact us for more information.

Visit [www.cornwall.gov.uk/admissions](http://www.cornwall.gov.uk/admissions) for more information and to access the online application system.



# Further News and Announcements

---

## Applying for a **reception class** place for **September 2025**

### Special Educational Needs

If an Education, Health and Care (EHC) Plan has been issued for your child you do not need to complete an application form. Please contact the Statutory SEN Service for more information: Tel: **01872 324242** Email: **statutorysen@cornwall.gov.uk**

### 1 Decide on your preferred schools

You are strongly advised to name **three** preferences on the application form. **Naming a second or third preference does not give you any less chance of getting a place at your preferred school.** When making your decision you should...

...think about **how you will get your child to school.** Go to **[www.cornwall.gov.uk/schooltransport](http://www.cornwall.gov.uk/schooltransport)** for more information on whether your child would be entitled to home to school travel assistance.

...look at the **admission arrangements** on our website that will be used to allocate places for each school.

...consider naming your **nearest or designated school** as one of your preferences. You can find your nearest or designated school on our website.

...look at the detailed **admissions information** on our website, also available on request.

### 2 Submit your application by 15 January 2025

Apply online at **[www.cornwall.gov.uk/admissions](http://www.cornwall.gov.uk/admissions)**

### 3 Wait to find out which school you have been allocated

If you applied on time you will be notified of your allocation on **National Offer Day: 16 April 2025.** **Apply on time!** Late applications will only be dealt with after National Offer Day and there may not be any places left at your preferred schools.

## Further News and Announcements



**FREE**

**CREATIVITY**

**CLUB**

**FOR 7-11 YEAR OLDS**

**JUST TURN UP!**

Every Monday 4-5pm  
The Centre Newlyn

Supported by

  
**MINACK**  
THEATRE

For more information email  
[education@minack.com](mailto:education@minack.com)

# WIN PRIZES



# SPIN TO WIN

**Find a sticker on the bottom of  
your plate and spin the wheel to  
win a prize**

**Every Tuesday and Thursday  
Lunchtime**

**PARKOUR**



**GYMNASTICS**

# ATTENTION

## FREE TRIALS!

New school year, new sport?  
Fancy trying Parkour,  
Gymnastics or Cheerleading?  
We are offering free class  
trials for the whole of  
October!

Head to our website to book  
your trials  
[www.westcoastacademy.co.uk](http://www.westcoastacademy.co.uk)

## **CHEERLEADING**

**BOOKING OPENS ON MONDAY  
23RD SEPTEMBER**

**MAXIMUM OF 2 TRIALS PER CHILD**

## Further News and Announcements

# JUNIOR HOCKEY



**Every  
Wednesday**

**From 4th September  
18:30-19:30**

**Every  
Sunday**

**From 8th September  
10:00-11:00**

**@ Pool Academy | 4-12 yrs | £3 per session  
Sticks will be provided**

**Parents: Sundays join our Walking  
Hockey group on the adjoining pitch**



**Y HCDUCHY HCDUCHY HCDUCHY HCDUCHY HCDUCHY HCDUCHY**

Find us on Instagram & Facebook @duchyhockeyclub



# WALKING HOCKEY



**IS BACK!**

Want to give hockey a go, but don't have the fitness? Looking to get back into playing or trying something new - WALKING HOCKEY is for you!

**EVERY SUNDAY from the 8th September!**

**10:00-11:00 am**

**Pool Academy  
TR15 3PZ**

**£3 per session**  
**card or cash payment**



**Sticks can be provided**

**Keep up to date on our Facebook  
page:duchyhockeyclub**

