



Friday 12th January 2024

Pennoweth News

Another fantastic week has passed at Pennoweth with the children now completing their first full week after the winter break.

Exciting developments have been taking place across the school. Particularly in Years Five and Six where they have been learning about the Bubonic plague and its effect on the United Kingdom. Children have begun developing journals from the perspective of a person living in these times and learnt a number of gruesome facts that individuals would have experienced during this time, should they have contracted the disease. Its safe to say that the children have thoroughly enjoyed learning this particular part of history and we look forward to reading their journals once these are completed. We may need to have our eyes closed at some parts after the children shared some of the details they intended to use within their writing!

In Year Three and Four, the children continued their historical learning around the Stone age, Iron Age and Bronze Age this week. The children continued to develop their understanding of what life would have been like for these people during this time and where these periods of time sit within a historical timeline.

Further down the school, within year One, the children have spent time representing the human face using a number of different mediums to represent this. The children have attempted to do this from memory from their observations and have explored this with enthusiasm. They created a plethora of amazing self portraits within their sketch books which we look forward to putting on display in our Creative Lab.

From a wider point of view, children from our Upper Keystage Two have taken part in a gymnastics competition. The children have been practicing and developing their skills and techniques over the past couple of weeks to create a routine that demonstrates their gymnastics abilities in a creative manner. I know that the children have spent several lunchtimes and time at home honing their skills to take part and represented the school successfully this afternoon. They were a credit to themselves and the school. Thank you to Miss Crane, Miss Butler and Mr Turner for organising and allowing the group to develop their routine so that they could participate in this fantastic competition.

May we remind you that clubs will begin from next week. We are eager to get started with these and I know the children have been itching to start the clubs as well.

Have a lovely weekend.

#Team Pennoweth

Our phase email addresses are:

eyfs@pennoweth.cornwall.sch.uk (for Nursery and Reception)

KS1@pennoweth.cornwall.sch.uk (for Years 1 and 2)

lowerKS2@pennoweth.cornwall.sch.uk (for Years 3 and 4)

upperKS2@pennoweth.cornwall.sch.uk (for Years 5 and 6)

Or contact: help@pennoweth.cornwall.sch.uk

School Lunches

Week beginning 15/01/24

(Week 3 Choices)

Chartwells meal menu is on the school website



Dates for your diary

Census Day

18th January 2024

Last day of Spring One Half Term

Friday 9th February 2024

Crofty Inset day

(School will not be open to pupils)

Monday 19th February 2024

Start of Spring Two Half Term

Tuesday 20th February 2024

Key messages from the Trust



Unit 2 The Setons,
Tolvaddon Business Park,
Camborne,
Cornwall,
TR14 0HX
admin@croftymat.org

19th December 2023

To all interested parties

Consultation on proposed changes to The Crofty Multi Academy Trust's Admissions Arrangements

Crofty Multi Academy Trust is reviewing its schools' admissions arrangements for the year 2025-26.

There is one change proposed in our 2025-26 admissions arrangements, which is:

1. To reduce the PAN of Porthleven Primary School from 40 to 30.

The proposed arrangements with the changes highlighted are in the attached draft admissions policy, and the information can also be found on the Trust website <https://croftymat.org/information/admissions>. We openly invite comments from all stakeholders on these proposed admission arrangements in accordance with the School Admissions Code. The six-week consultation period begins on Tuesday 19th December 2023 and will end on Wednesday 31st January 2024.

You can submit your comments by emailing admin@croftymat.org or writing to the Company Secretary at Unit 2 The Setons, Tolvaddon Business Park, Camborne, Cornwall, TR14 0HX.

Please use the reference 'Consultation Admission Arrangements 25-26' as your subject heading. Comments are invited by the close of the school day on Wednesday 31st January 2024. We will, in due course, provide feedback on this consultation. If no feedback is provided, please assume that no objections have been brought to our attention.

If you have any queries about the changes to arrangements, or the process, please do not hesitate to contact us.

Yours faithfully

A handwritten signature in black ink, appearing to be "S. Hague", written over a horizontal line.

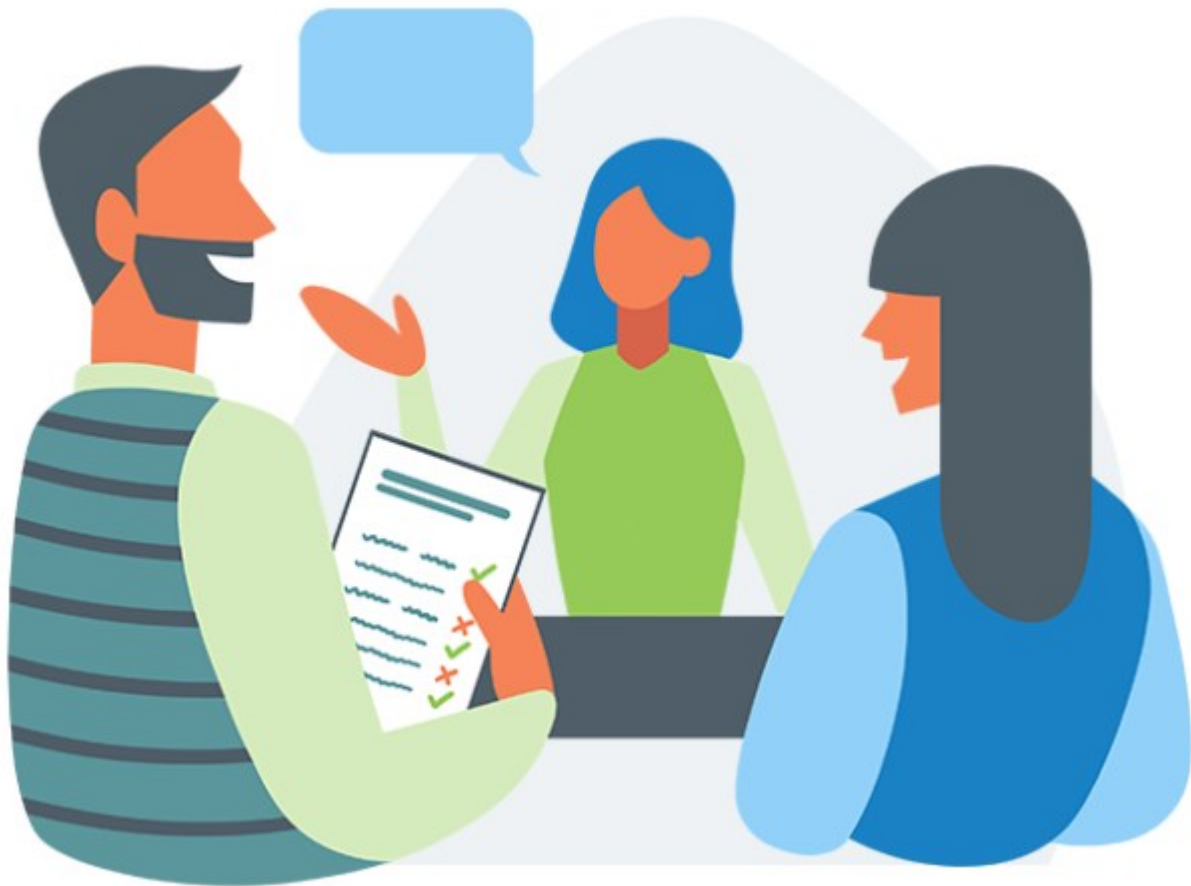
Simon Hague
Chief Executive
Crofty Multi Academy Trust

Key messages from the School

Newlyn Parents

Parents consultations will be taking place for Newlyn Class on Tuesday 6th February and Wednesday 7th February.

You should have all received a Marvellous Me message earlier in the week. Please keep an eye on the newsletter and on Marvellous Me communications for updates on how to book an appointment with Mrs Kerry.



Our DNA

Everything we do in school is shaped by our Pennoweth DNA statements. Each week each phase team identifies one child who has done a fantastic job of demonstrating each strand of the DNA. Well done to all the children below.

We are safe.

We feel loved.


We take responsibility.

We are always learning.

We are ready.

Congratulations to our stars of the week from each class! Well done everyone!

Quality	Year R, Y1 and Y2	Year 3+4	Year 5+6
Safe	Willow (Mevagissey) Logan (Restormel) Brodie (Tintagel)	Cody (Lizard)	Theo (Geevor)
Loved	Maya (Gwithian)	Jax (Lizard)	Maddison (Levant)
Responsible	Syrus (Newlyn) Seb (Restormel) Darcy (Tintagel)	Zakary (Pendeen)	Bogdana (Poldark)
Learning	Denas (Newlyn)	Alesha Mae (Pendeen)	Dexter (Levant)
Ready	Maria (Porthcurno)	Emmie (Godrevy)	Ivy (Geevor)

Pendennis Daily Awards	Tintagel Hafsa
Restormel Ivy	Porthcurno Hunter
Gwithian Tristan	Newlyn Immy
Mevagissey Delilah	Pendeen Lucy
Godrevy Kaydon	Lizard Lukas
Levant Jack	Geevor Isabella
Poldark Eva	

Attendance

We aim for all our children to have at least 96% attendance throughout the year.

Overall attendance for this week was

93.5%

See below for the attendance for each class last week.

Pendennis	95.6%
Tintagel	95%
Restormal	96.2%
Porthcurno	85.4%
Gwithian	82.3%
Newlyn	88.2%
Mevagissey	94.8%
Pendeen	97.7%
Lizard	87.1%
Godrevy	99.3%
Levant	96.7%
Geevor	96.7%
Poldark	98.7

Congratulations Godrevy class!



Online Safety Update

At National Online Safety, we believe in empowering parents, carers and trusted adults with the information to hold an informed conversation about online safety with their children, should they feel it is needed. This guide focuses on one of many issues which we believe trusted adults should be aware of. Please visit nationalcollege.com for further guides, hints and tips for adults.

What Children & Young People Need to Know about

FREE VS HATE SPEECH

Everyone in the UK has the right of "freedom of expression". That's the right to voice your opinions and share information and ideas with others. It's not the right to say whatever you want without regard for others' feelings and values. We all have a responsibility to use this right properly: being respectful and inclusive to those around us, rather than making offensive and threatening remarks. That's called 'hate speech' and knowing the difference is incredibly important.

Free speech is a person's legal right to share information, opinions and ideas without fear of retaliation, censorship or legal consequences. This freedom of expression is recognised in international human rights legislation, and here's what it does for us in our day-to-day lives ...

The Human Rights Act 1988 states that everyone has the right to express themselves freely – even if their views are unpopular and might offend others.

Freedom of expression encourages listening to others and allowing opposing views to be heard. It's important to respect someone's opinion, even if we disagree with it. Free speech lets us engage in meaningful discussions with people who feel differently.

Any concept could potentially offend someone. Galileo's theories were incredibly offensive to many at the time, while not everyone agrees with Darwin, even today. A frequent exchange of ideas is vitally important for a healthy society.

Free speech allows us to engage people we disagree with in a debate. The ability to challenge others' views is healthy – while having ours challenged helps us learn how to deal with criticism and think deeply about what we say and believe.

Freedom of expression includes the right not to do something, like not standing up for – or singing – the national anthem. Even though some people would find that offensive, it isn't illegal. By law, nobody can force you to say anything you don't want to.

Free speech is a powerful tool for change, justice and reform. Many modern UK rights – such as women being allowed to vote, decent working conditions or same-sex marriage – couldn't have been achieved without it.

Hate speech refers to any communication – like talking, texting or posting online – that negatively targets a group or an individual because they are perceived to be different in some way. Demonising and dehumanising statements, threats, identity-based insults, offensive name-calling and slurs would all count as hate speech. Here are some common forms it takes...

Targeting people or groups because of a protected characteristic – like race, gender identity, sexuality, nationality, religion or a disability – and verbally abusing them with slurs and name-calling. The Equality Act 2010 has more information on this.

Content that dehumanises people based on the same characteristics: referring to them as if they were animals, objects or other non-human entities, for example. Separating the target from other human beings is usually an attempt to justify the speaker's bigotry.

Calling for violence or hatred against certain people or groups and justifying and glorifying those actions. Suggesting that a certain group should be removed from society could be seen as a call to arms, for example – potentially putting people from that group in danger.

Claiming that specific types of people are physically, mentally or morally inferior (or even that they are criminals) to encourage others to view them in the same way. This kind of thinking is always incorrect – but can be incredibly harmful to the group in question.

Spreading damaging misinformation about a person or group that the speaker views as "different" – essentially, trying to turn others against them by lying. Someone might claim that a recent tragedy is the fault of this entire group, when this is simply not possible.

Promoting the segregation of certain groups, or discrimination against them, because of who they are. This has been illegal in the UK for a long time – but some people still try to promote the exclusion of others, which can cause a huge amount of distress.

Meet Our Expert

The Global Equality Collective is an online community for homes, schools and businesses, a collective of hundreds of subject matter experts in diversity, equality and inclusion, and the organisation behind the GEC app, the world's first app for diversity, equality and inclusion.

GLOBAL
EQUALITY
COLLECTIVE

Source: <https://www.legislation.gov.uk/ukpga/2010/15/contents/1>
<https://www.legislation.gov.uk/ukpga/1998/42/schedule/11a-text=1everyone%20has%20the%20right%20to%20freedom%20of%20expression>

The National
College®

NOS
National
Online
Safety®
#WakeUpWednesday

@natonlinesafety

/NationalOnlineSafety

@nationalonlinesafety

@national_online_safety

Users of this guide do so at their own discretion. No liability is entered into. Current as of the date of release: 10.01.2023

Early Help Drop-in Coffee & Chat Mornings



Kerrier Coffee Morning

12th January at Redruth Family Hub 09.30-11.30am

Guest speaker- Parent Carers Cornwall Team. With youth worker and family workers available for advice.

Penwith Coffee Morning

19th January at Hayle Family Hub 09.30am-11.30am

Guest Speaker- Parent Carers Cornwall Team. With youth worker and family worker available for advice.

Parent Carers Cornwall want to ensure that all SEND parents have their voices heard and enable parent carers to gain greater knowledge and understanding of the services available to them and their child from health, education, local authority and the voluntary sector.

Both events are free of charge with refreshments provided.

**For any further information
please contact:**

Email: Penwith.FamilyHub@cornwall.gov.uk
or Kerrier.FamilyHub@cornwall.gov.uk



Further News and Announcements

CMST AND ASONE
MUSIC



Learn The Ukulele With Us

PARC EGLOS
SCHOOL
SATURDAY
MORNINGS
10:30-12

LET'S LEARN
AND PLAY!



LEARN:

- How to play ukulele
- Ukulele chords
- Basic strumming patterns

For more information, please contact:
[SSCOTT@CORNWALLMUSICSTRUST.ORG](mailto:sscott@cornwallmusicstrust.org)



Further News and Announcements

Come and try Judo

First two classes are free

New beginners class starts Tuesday 9th January

All ages welcome from 5 onwards

Learn discipline through a traditional martial art

Create new friendships that last a lifetime

Learn to cope with success and failure through sport

Create a healthy mind and body

Reach new goals

Be part of a team whilst focusing on individual achievement

World and Olympic sport



All instructors are fully qualified, insured, DBS checked and hold first aid and safeguarding certificates.



Members of the
British Judo Council
Affiliated to the
British Judo Association



CARN BREA JUDO CLUB

Contact us through our facebook messenger carnbreajudo.co.uk

Location; Roskear School main hall

Time; Tuesday 6pm to 7pm

Further News and Announcements



BETHEL
• COMMUNITY LARDER •

COMBATING
FOOD WASTE
ONE BAG AT A
TIME

ALL
FREE

£1 DONATION
GRATEFULLY
RECEIVED

EVERY TUESDAY
9:30 – 11:30AM

ONE BAG PER HOUSEHOLD

No voucher /referral needed

- **Community Café** open at the same time: hot drinks, soups, pasties and sausage rolls - all free.
- **Clothes Rail** - available to whoever needs it. No questions asked.

 Pond Lane, Redruth
TR15 1BQ

 Bethel Community
Church Redruth

Further News and Announcements

WWW.GWEALANTOPS.ORG



**WEDNESDAYS
FROM 4.30-6PM
FOOD SERVED @ 5PM**

Free
**TEATIME
COMMUNITY
MEALS**

**A WARM WELCOME, WITH HOT TASTY
FOOD AND GREAT COMPANY!
NO REFERRAL OR VOUCHER NEEDED
ALL DIETS CATERED FOR**



Menus for this term:



- 10 Jan - Jacket Potatoes
- 17 Jan - Pasta and Meatballs/VeggieBalls
- 24 Jan - Curry and Rice
- 31 Jan - Sausage/Veggie Sausage & Mash
- 7 Feb - Sweet & Sour Chicken with Stir Fry Veg

**Please let us know if you'd
like to come - email
deborah@gwealantops.org**



**GWEALAN TOPS ADVENTURE PLAYGROUND
SCHOOL LANE REDRUTH TR15 2ER**



Further News and Announcements



2024

Starting Tues 16 Jan

Cubs in the Wild for parents/carers & under 6s

Tuesday morning

Contact donna@gwealantops.org to book

Starting Thurs 11 Jan

Dance Club Thursdays

Contact kerry@gwealantops.org to book

OPENING TIMES

TUES 9 JAN -

THUR 28 MAR

Term time free drop in adventure play sessions for 7-16 year olds
Tuesday to Friday 3.15-5.30pm and Saturday 12-4pm

Starting Wed 10 Jan FREE

Community Family Meals
Wednesdays
4.30-6pm

Contact deborah@gwealantops.org to book

ALL children must be registered
NEW USERS need to arrange an induction session
See www.gwealantops.org for more info

Starting Fri 12 Jan Youth Club
Free for 13s & overs
Just drop in Fridays, 5.30-7pm

www.gwealantops.org
01209 697 717

Feb Half Term
Mon 12 - Fri 16 Feb
Details to follow

