



Friday 8th December 2023



# Pennoweth News

Another busy week has passed at Pennoweth again.

This week has seen a number of events take place starting with last Friday's Winter Fayre. It was once again another fantastic occasion which was well attended, with a plethora of stores and games manned by our wonderful PTA and staff. I think we can all agree that it was a fantastic event and we would like to thank all who were involved in running the event as there was many long hours of planning and preparation that went into the event from a number of volunteers. Without their freely given time and effort, it would not have been as

spectacular as it was.

The raffle winners were drawn at the close of the events by Mrs Andrews and can be found on the next page. If you have not yet collected your prize, please make sure to collect this from the office before the end of this half term.

In other news, the children from our Early Years and Keystage One attended St Andrews Church on Tuesday, where they performed a Christmas concert which was once again very well attended and supported. The children took time to read through the Christmas Story and performed a number of festive carols and songs to kick off the Christmas season. The children were once again a credit to the school as they sensibly walked from school to the church. Pennoweth would also like to thank all of our parent volunteers who supported the children in safely walking to and from the church. Once again, without your support the event could not have gone ahead.

Unfortunately for Keystage Two, an amber weather warning caused for the event to not take place to the great disappointment of the children, staff and community. This was not an easy decision to make, but we are hoping that the disappointment will not last as we will hopefully get another opportunity to perform at our 'Songs on the Steps' on the 18th December. Please make sure to join us as our children will be raring to perform once again and set us all up with the coming festivities moving into the Christmas break.

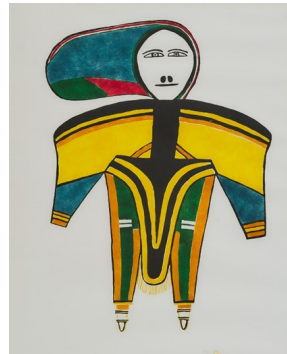
Nevertheless, the children have also been busy at work finishing off and completing a number of tricky topics as we move closer to the end of term. In amongst the end of term madness, we have also been running a Christmas PE advent event this week. A number of Challenges have been completed by the children across the school. If you would like to continue the challenge at home, over the weekend, and leading up to Christmas, please follow the link below:

<https://calendar.myadvent.net/?id=dpuig7v8eef148poc4b409rjs4gw6por>

In Keystage Two, DT, Art and Geography continue to be the focus for many of our classes. In Year Five and Six, the children have been developing art in the style of Inuit painting. This required the children to consider the types of colours and palette which is traditional for this style of art and to reflect this within the traditional Inuit style.

Whereas, within Years Three and Four, the children have been learning about The Iroquois Tribe. They have been reflecting on their learning so far within their topic 'Road Trip USA' and now making comparisons to local tribes and our modern day culture. I look forward to seeing what they produce in the final weeks to celebrate their learning within this topic.

A final thank you to our wonderful PTA who organised the 'Travelling Panto' to arrive today. The children were thrilled to experience this and thoroughly enjoyed the show! This was of course enjoyed with a treat bag, which was once again provided by our amazing PTA.



Our phase email addresses are:

[eyfs@pennoweth.cornwall.sch.uk](mailto:eyfs@pennoweth.cornwall.sch.uk) (for Nursery and Reception)

[KS1@pennoweth.cornwall.sch.uk](mailto:KS1@pennoweth.cornwall.sch.uk) (for Years 1 and 2)

[lowerKS2@pennoweth.cornwall.sch.uk](mailto:lowerKS2@pennoweth.cornwall.sch.uk) (for Years 3 and 4)

[upperKS2@pennoweth.cornwall.sch.uk](mailto:upperKS2@pennoweth.cornwall.sch.uk) (for Years 5 and 6)

Or contact: [help@pennoweth.cornwall.sch.uk](mailto:help@pennoweth.cornwall.sch.uk)

School Lunches

Week beginning 11/12/23

(Week 1 Choices)

Chartwells meal menu is on the school website



Dates for your diary

Please see the following page for key dates for this half term.

Wednesday 20th

December —

Wednesday January 3rd

Winter Break

Childrens first day back

Thursday 4th January 2024)

# Christmas Fair 2023

## Raffle Winners

<b>1<sup>st</sup> £100</b>	<b>Emma (external)</b>
<b>2<sup>nd</sup> £50</b>	<b>Charlie (Godrevy)</b>
<b>3<sup>rd</sup> £25</b>	<b>Jack (Geevor)</b>
<b>4<sup>th</sup> Hamper</b>	<b>Sam (Newlyn)</b>
<b>5<sup>th</sup> Hamper</b>	<b>Caroline (external)</b>
<b>6<sup>th</sup> Animal Experience</b>	<b>Ashley</b>
<b>7<sup>th</sup> Surf Lesson</b>	<b>Massen</b>
<b>8<sup>th</sup> Bearded Farmer Voucher</b>	<b>Jack (Lizard)</b>

**Name the elf**      **Ivy & Georgie**

**Air Up Bundle**      **TJ & Kodi**

**Guess the sweets**      **Emillie**

---

# Key dates for your Diaries

---

## Monday 11th December

Reception and KS1 Christingle Service

(1:45pm @ Redruth Baptist Church)

## Tuesday 12th December

UKS2 Christingle Service

(10am @ Redruth Baptist Church)

LKS2 Christingle Service

(1:45pm @ Redruth Baptist Church)

## Wednesday 13th December

Christmas Dinner Day

## Thursday 14th December

Visit with Santa

Present for Loved Ones Stall

## Monday 18th December

Songs on the Steps

(5pm @ Pennoweth School)



## Key messages from the School

---

### Songs on the Steps

We will be putting on a special outdoor concert on Monday 18th December at Pennoweth School. This will take place at 5pm and we encourage you to attend and sing along with the children. This will be a combination of songs performed at our Christmas concert alongside some further festive carols. Watch out for a letter with more information on Monday.



# Key messages from the School

**PENNOWETH PRIMARY and NURSERY SCHOOL**

Drump Road,  
Redruth  
Cornwall,  
TR15 1NA



T: 01209 215671  
F: 01209 215671

E: [secretary@pennoweth.cornwall.sch.uk](mailto:secretary@pennoweth.cornwall.sch.uk)  
Headteacher: Mrs C Andrews  
[www.pennoweth.cornwall.sch.uk](http://www.pennoweth.cornwall.sch.uk)

28<sup>th</sup> November 2023

Dear Parents/Carers

## After School Activity Clubs – Spring 2024

The list below details the after school activity clubs that will be available during the Spring term 2024. Please note that clubs are offered separately for Reception classes and then in 'phase' teams (KS1 clubs for years 1 and 2, Lower KS2 clubs for years 3 and 4 and Upper KS2 clubs for years 5 and 6 unless otherwise indicated).

The sign up process for clubs will be via Parent Pay (there is no charge for the clubs) and **will open at 5pm on Thursday 30<sup>th</sup> November**. Sign up will close at 10am on Wednesday 6<sup>th</sup> December. Allocation will be on a first come, first served basis. Clubs will be limited to the numbers indicated below. Clubs will start week commencing Monday 15<sup>th</sup> January and will run for 10 sessions. All clubs will finish at 4.15pm; all children should be collected from **the main office**. We will confirm which clubs children have been allocated by the end of Monday 11<sup>th</sup> December. Notifications will be sent out via Marvellous Me.

If you don't currently have access to Parent Pay and would like to get this in place to enable you to sign up for clubs, please get in touch with the school office who will be happy to help.

Best wishes  
Cathryn Andrews

## **After School Activity Clubs – Spring 2024**

Adult	Classes	Club	Day
Mr Moore / Mrs Andrew	Reception- Tintagel, <del>Bestormel</del>	Art	Monday (12 places)
Mrs Howells	Reception – Tintagel, <del>Bestormel</del>	Multi-sports	Thursday (20 places)
Mrs Mallaber	KS1 – <del>Porthcurno, Gwithian, Mewagissey, Newlyn</del>	Gardening	Monday (12 places)
Mrs Morris	KS1 – <del>Porthcurno, Gwithian, Mewagissey, Newlyn</del>	Art	Tuesday (12 places)
Miss Green	KS1 – <del>Porthcurno, Gwithian, Mewagissey, Newlyn</del>	Art around the world	Tuesday (20 places)
Mrs Makin	KS1 – <del>Porthcurno, Gwithian, Mewagissey, Newlyn</del>	Phonics	Tuesday <b>Invitation only</b>
Mrs Sadler	LKS2 – Lizard, <del>Bendeen, Geevor</del>	Mindfulness Colouring	Tuesday (20 places)
Miss Morsley	LKS2 – Lizard, <del>Bendeen, Geevor</del>	Earth Explorers (Geography)	Thursday (20 places)
Miss Haley	UKS2 – Levant, Poldark, <del>Geevor</del>	Maths SATs booster	Tuesday <b>Invitation only</b>
Mr Boisseau	UKS2 – Levant, Poldark, <del>Geevor</del>	Chess	Monday (12 places)
Mr Riches	UKS2 – Levant, Poldark, <del>Geevor</del>	Lego League	Tuesday <b>Invitation only</b>
Miss Mather-Crane	UKS2 – Levant, Poldark, Geevor	Lacrosse	Thursday (20 places)



# Our DNA

Everything we do in school is shaped by our Pennoweth DNA statements. Each week each phase team identifies one child who has done a fantastic job of demonstrating each strand of the DNA. Well done to all the children below.

We are safe.

We feel loved.


We take responsibility.

We are always learning.

We are ready.

Congratulations to our stars of the week from each class! Well done everyone!

Quality	Year R, Y1 and Y2	Year 3+4	Year 5+6
Safe	Rogan (Restormel) Esme (Mevagissey)	Cory (Lizard)	Zach (Levant)
Loved	Aiden (Tintagel) Ivy (Restormel) Maria (Porthcurno)	Jack (Lizard)	Tyler (Geevor)
Responsible	Grace (Mevagissey)	Ollie (Pendeen)	Summer (Levant)
Learning	Imogen (Newlyn)	Amelia (Pendeen)	Layla (Geevor)
Ready	Raife (Tintagel) Kotryna (Gwithian)	Harry (Godrevy)	Ruby (Poldark)

Pendennis Daily Awards	Tintagel Lyle
Restormel Sophia	Porthcurno Riley
Gwithian Logan	Newlyn Syrus
Mevagissey Alfie	Pendeen Elden
Godrevy Blake	Lizard Rizzick
Levant Penny	Geevor Loki
Poldark Harley	

# Attendance

We aim for all our children to have at least 96% attendance throughout the year.

Overall attendance for this week was

94.3%

See below for the attendance for each class last week.

Pendennis	89.63%
Tintagel	94.09%
Restormel	91.00%
Porthcurno	93.60%
Gwithian	87.78%
Newlyn	96.36%
Mevagissey	95.45%
Pendeen	93.87%
Lizard	85.71%
Godrevy	97.33%
Levant	97.67%
Geevor	89.33%
Poldark	92.26%

Congratulations Levant class!



# Online Safety Update

At National Online Safety, we believe in empowering parents, carers and trusted adults with the information to hold an informed conversation about online safety with their children, should they feel it is needed. This guide focuses on one of many platforms which we believe trusted adults should be aware of. Please visit [nationalcollege.com](http://nationalcollege.com) for further guides, hints and tips for adults.

## What Parents & Carers Need to Know about **DISNEY+**

The Walt Disney Company's streaming service, Disney+ combines entertainment from the famous animation studio itself with Pixar, Star and National Geographic, plus the Marvel and Star Wars franchises. With access to the latest releases, Disney classics and original series, there's plenty of content to explore. While parents may have noted that adverts have now been introduced on some versions of the service, the platform is – unsurprisingly for a Disney product – designed to be appropriate for the whole family.

### WHAT ARE THE RISKS?

#### LESS SUITABLE CONTENT

While Disney+ is predominantly family friendly, there are some movies and shows in its library which are aimed at an older audience: these may scare younger ones or contain themes or language that you'd rather your child wasn't exposed to. You could avoid such situations by enabling Junior Mode (see 'Adjust content settings', below) or specifying a content age rating for your child's profile.

#### BINGE WATCHING

With the option to view content on any internet-enabled device and a growing catalogue of movies, cartoons and documentaries, Disney+ can make managing screen time difficult. This could result in children binge watching content, distracting them from activities like homework or socialising. Too much screen time has also been shown to negatively impact mood, sleep patterns and weight.

#### PHISHING EMAILS

Be especially cautious if you receive emails or text messages purporting to be from Disney+. There have been numerous reports of online scammers impersonating Disney+ staff in an attempt to gain access to subscribers' personal information. Disney+ states it will never email or call customers asking for their payment details, their private information or their password.

#### ENCROACHING ADVERTS

Disney+ has introduced a new subscription package – Disney+ Standard with Ads – which plays commercials before movies and during shows (like many TV channels). There are no adverts in Junior Mode, but profiles with a content rating of 6+ years will see ads appropriate for that age category. Adults who give consent will see personalised adverts based on their location and viewing history.

#### ACCESSING ADULTS' PROFILES

If adults don't set a PIN for their profile, children could access it and encounter content which isn't age appropriate. In the settings, Junior Mode has a toggle titled 'Kid-Proof Exit' which requires the user to read four words (numbers, spelled out) and enter them to switch profiles. For older children who can read, though, this isn't secure enough – so using a PIN for adult profiles is recommended.

### Advice for Parents & Carers

#### ADJUST CONTENT SETTINGS

When setting up an account, there's an option to create profiles in what's called Junior Mode. This generally covers material that's suitable for children up to age 6 and is therefore fairly limited. You can give older children a wider choice of viewing by building a standard profile, then going into the settings and choosing a content rating from one of the pre-set alternatives: 6+, 9+, 12+ or 14+.

#### TURN OFF AUTO-PLAY

When a cartoon, show or movie finishes, Disney+ uses algorithms to identify content with similar themes, which it thinks your child will also enjoy. This suggestion will then automatically begin to play by default. There's an option to turn off this auto-play function in the profile settings, which will encourage your child to take a break from the screen and move on to a different activity.

#### ADD PIN PROTECTION

Disney+ enables you to effectively lock profiles behind a four-digit PIN. In particular, some of the shows on the platform's Star content hub are far more oriented to adults (including several hard-hitting dramas from US networks), so protecting parents' or older siblings' profiles with a PIN will help to prevent younger children stumbling across material which isn't intended for them.

#### ENJOY AS A FAMILY

When your child watches a movie or show on Disney+ for the first time, you may want to sit with them to ensure it's suitable. You could do the same when introducing them to older films that you haven't seen for years: your perception of what's appropriate has very probably changed, and some of the language and attitudes in movies from your own childhood may seem quite shocking today.

#### Meet Our Expert

Dr Claire Sutherland is an online safety consultant, educator and researcher who has developed and implemented anti-bullying and cyber safety policies for schools. She has written various academic papers and carried out research for the Australian government comparing internet use and sexting behaviour of young people in the UK, USA and Australia.



**NOS** National Online Safety®  
#WakeUpWednesday

Source: [https://help.disneyplus.com/csp?id=csp\\_article\\_content&sys\\_kb\\_id=f68cd3d3bfc49860f3eac13361970](https://help.disneyplus.com/csp?id=csp_article_content&sys_kb_id=f68cd3d3bfc49860f3eac13361970) [https://help.disneyplus.com/csp?id=csp\\_article\\_content&sys\\_kb\\_id=f53eb01fabd441d03af62ed3961936](https://help.disneyplus.com/csp?id=csp_article_content&sys_kb_id=f53eb01fabd441d03af62ed3961936)  
[https://help.disneyplus.com/csp?id=csp\\_article\\_content&sys\\_kb\\_id=9582efcbablaac5005ceadd31961917](https://help.disneyplus.com/csp?id=csp_article_content&sys_kb_id=9582efcbablaac5005ceadd31961917) <https://help.disneyplus.com/en-gb/article/disneyplus-en-us-scam-prevention#:~:text=Be%20wary%20of%20sites%20that,as%20password%20or%20billing%20details>



@natonlinesafety



/NationalOnlineSafety



@nationalonlinesafety



@national\_online\_safety

Users of this guide do so at their own discretion. No liability is entered into. Current as of the date of release: 00.00.2023



# Further News and Announcements

---

CMST AND ASONE  
MUSIC



## Learn The Ukulele With Us

PARC EGLOS  
SCHOOL  
SATURDAY  
MORNINGS  
10:30-12

LET'S LEARN  
AND PLAY!



### LEARN:

- How to play ukulele
- Ukulele chords
- Basic strumming patterns

For more information, please contact:  
[SSCOTT@CORNWALLMUSICSTRUST.ORG](mailto:sscott@cornwallmusicstrust.org)



# Further News and Announcements

## Come and try Judo

First two classes are free

New beginners class starts Tuesday 9<sup>th</sup> January

All ages welcome from 5 onwards

Learn discipline through a traditional martial art

Create new friendships that last a lifetime

Learn to cope with success and failure through sport

Create a healthy mind and body

Reach new goals

Be part of a team whilst focusing on individual achievement

World and Olympic sport



All instructors are fully qualified, insured, DBS checked and hold first aid and safeguarding certificates.



Members of the British Judo Council  
Affiliated to the British Judo Association



**CARN BREJA JUDO CLUB**

Contact us through our facebook messenger [carnbreajudo.co.uk](http://carnbreajudo.co.uk)

Location; Roskear School main hall

Time; Tuesday 6pm to 7pm

# Further News and Announcements

---



**BETHEL**  
• COMMUNITY LARDER •

COMBATING  
FOOD WASTE  
ONE BAG AT A  
TIME

ALL  
FREE

£1 DONATION  
GRATEFULLY  
RECEIVED

EVERY TUESDAY  
9:30 – 11:30AM

**ONE BAG PER HOUSEHOLD**

No voucher /referral needed

- **Community Café** open at the same time: hot drinks, soups, pasties and sausage rolls - all free.
- **Clothes Rail** - available to whoever needs it. No questions asked.

 Pond Lane, Redruth  
TR15 1BQ

 Bethel Community  
Church Redruth

# Further News and Announcements



## HOLIDAY PLAYSCHEME

WED 20 & THUR 21 DEC - 12PM-4PM

FREE LUNCHTIME MEAL AT 12:30PM

FRI 22 DEC - 12PM-1:30PM

FOR 7-16 YEAR OLDS



FRI 22 DEC 1:30PM-4PM

FESTIVE MEAL, MUSIC & FUN

LIMITED PLACES AVAILABLE & MUST BE PREBOOKED

EMAIL [MANAGER@GWEALANTOPS.ORG](mailto:MANAGER@GWEALANTOPS.ORG)

PLEASE BRING YOUR OWN  
WATER/DRINKS BOTTLE

CHILDREN MUST BE REGISTERED  
& NEW USERS MUST ATTEND AN INDUCTION VISIT WHICH  
CAN BE BOOKED AT [MANAGER@GWEALANTOPS.ORG](mailto:MANAGER@GWEALANTOPS.ORG)

[WWW.GWEALANTOPS.ORG](http://WWW.GWEALANTOPS.ORG)



# Further News and Announcements



Cubs in the Wild for  
parents/carers & under  
6s Tuesday morning  
Contact [donna@gwealantops.org](mailto:donna@gwealantops.org)  
to book

Dance Club  
Thursdays  
Contact  
[kerry@gwealantops.org](mailto:kerry@gwealantops.org)  
to book

Free  
Community  
Family Meals  
Wednesdays  
4.30-6pm

Contact  
[deborah@gwealantops.org](mailto:deborah@gwealantops.org)  
to book



LEVELLING  
UP

[www.gwealantops.org](http://www.gwealantops.org)  
01209 697 717

Winter  
OPENING TIMES  
TUES 31 OCT -  
TUES 19 DEC  
Term time free drop in  
adventure play sessions  
for 7-16 year olds  
Tuesday to Friday  
3.15-5.30pm and  
Saturday 12-4pm

ALL children must be registered  
NEW USERS need to arrange an  
induction session  
See [www.gwealantops.org](http://www.gwealantops.org)  
for more info

Youth Club  
Free for 13s & overs  
Just drop in Fridays, 5.30-7pm

Christmas Holidays  
Wed 20 - Fri 22 Dec

Details to follow

  
Garfield Weston  
FOUNDATION

# Christmas afternoon

Adults  
£5  
Children  
£10

December 10th, 1pm to 4pm

Fancy Dress competition  
(children & adults)

Festive cricket

Elf Workshop

Stalls

&

# Meet Santa

at Cornwall Cricket Centre

Book today at

<https://booking.ecb.co.uk/d/qpqkkd>

or scan the QR Code

